

# Pricing Options to Meet YOUR Needs

## MEMBER CONTRACTS

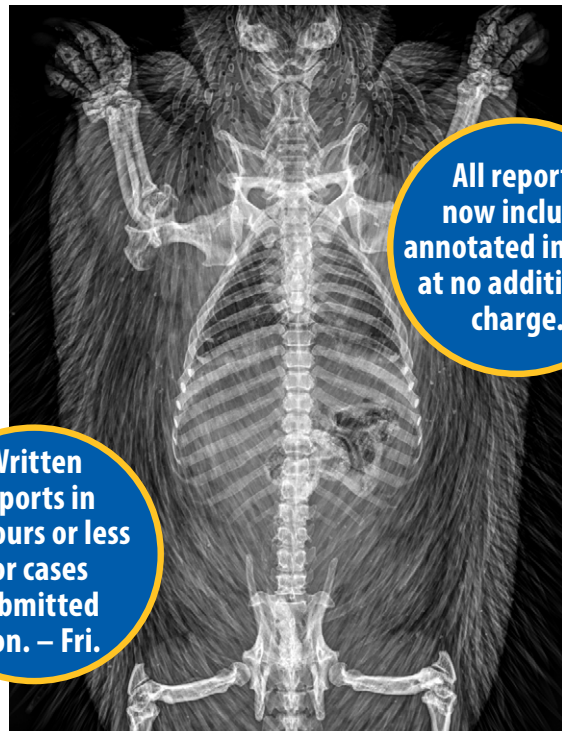
Membership Levels	Studies Submitted	Annual Cost	Member Cost per Study
<b>Silver Packages (Radiographs Only)</b>			
Level 1	10	\$1,500	\$150
Level 2	30	3,450	115
Level 3	70	7,000	100
Additional studies submitted are charged at member level cost. Package includes 10% discount off à la carte pricing for US/CT/MRI.			
<b>Gold Packages (80% Radiographs, 20% Other Modalities)</b>			
Level 1	10	1,700	170
Level 2	30	4,000	133
Level 3	70	8,400	120
Additional studies submitted are charged at member level cost for radiographs and 25% off à la carte pricing for US/CT/MRI.			
<b>Platinum Packages (Any Modality)</b>			
Level 1	25	5,000	200
Level 2	50	9,500	190

*When selecting a contract level, we encourage you to consider how many cases last year could have benefited from a radiologist's expert opinion rather than how many studies you actually sent out for review. Custom packages are available – please inquire.*

1. Radiographs. One study includes orthogonal projections of the whole body for small animals or a body region for large animals. Oblique views may be added when indicated. Studies with greater than eight images may be counted as two submissions. Historical studies may be provided for reference, but will not be included in the report.
2. Ultrasound. One study is defined as containing ≤ 10 images/video clips. Submissions with >10 may be counted as multiple studies.
3. Cross-sectional (CT/MRI). For animals exceeding 30cm in length, each body region (e.g. head, thorax & forelimbs, or abdomen & pelvic limbs) are considered one study.
4. A variety of key images is included at no additional charge, including 3D reconstructions as appropriate. Complicated requests for additional images may incur a small fee.

## À LA CARTE

Services	Cost per Study
<b>Radiographic study<sup>1</sup></b>	
Written report with annotated images	\$200
<b>Ultrasound<sup>2</sup></b>	
Written report with annotated images	200
<b>CT or MRI<sup>3</sup></b>	
Written report with annotated images	250
<b>Stat report fee</b>	
Turnaround in <24 hours	150
<b>Non-urgent study report</b>	
Turnaround of up to 7 days for non-urgent cases	-10%



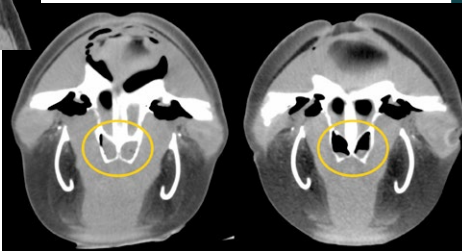
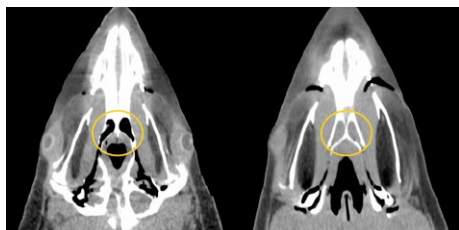
**RADIOLOGY**  
CONSULTING SERVICE

BROOKFIELD  
**Z**  
CHICAGO

## JUSTIFYING THE COST

Do you see the value in a radiology report but struggle to justify the cost? Consider the cost of a Level 2 Silver Package with 30 studies a year for \$115 each. That's just one difficult case every other week.

How does this cost compare to the typical expense of evaluating a patient concern? You could avoid hours of veterinary and animal care staff time, along with extra exams and unnecessary CBC and chemistry panels. Serology and empirical treatments often cost hundreds of dollars—consider the impact a radiology report could have on your case management.



## OTHER SERVICES

Inquire for pricing information.

- **On-site services**

Radiologist support for ultrasound, CT, and MRI image acquisition, interpretation, and training/education. Selected interventional radiology services are also available.

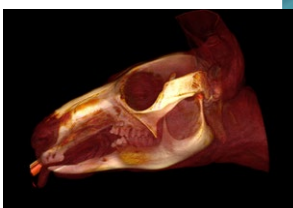
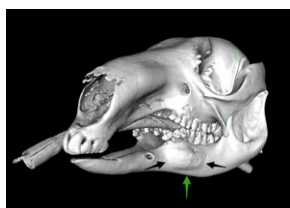
- **Study planning:**

Proper planning and execution of diagnostic imaging studies make a big difference in the quality of the information acquired, particularly for cross-sectional imaging (CT/MRI). We offer consultation on patient positioning, machine settings, image capture parameters, contrast administration, and other logistical and technical details to optimize image acquisition.

Concurrent consultation with BZC clinical veterinarians is also available to help plan anesthesia for complicated imaging studies, such as those that require long anesthetic periods for transport to off-site imaging locations, total intravenous anesthesia, ventilation, etc.

- **3D modeling, volume/video rendering, and 3D printing**

Options are available to meet your clinical and educational needs.



## FOR MORE INFORMATION

Please visit our website at  
[brookfieldzoo.org/  
radiology](http://brookfieldzoo.org/radiology)  
or email us at

[Radiology@brookfieldzoo.org](mailto:Radiology@brookfieldzoo.org)  
or call **708-688-8727**.

*The Brookfield Zoo Chicago  
is a nonprofit organization.  
Radiology service fees  
are structured to offset  
operational costs. We are intent  
on creating a collaborative  
service and valuable  
resource for the zoo and  
aquarium community.*

**BROOKFIELD**  
**ZOO**  
**CHICAGO**